

Trolleys for the NP01 track system

The NorAcon traversing trolleys are designed for a BMU workage (single suspension system) or a suspended platform (double suspension system).

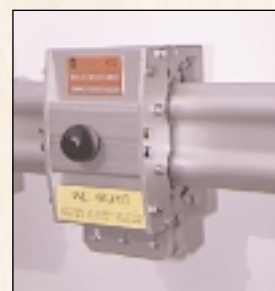
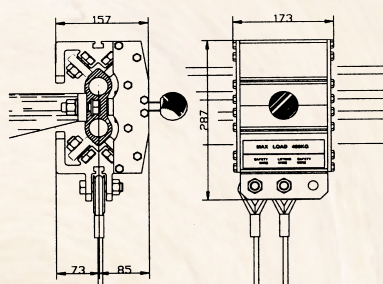
The chassis of the trolley is manufactured in aluminium. The trolley can be delivered in three versions; manual, rope driven or electric powered version.

MANUAL TRAVERSING TROLLEY NP01 M

The manual trolley comprises 8 stainless steel rollers. For most buildings, a manual trolley is sufficient, since the effort required to traverse the trolley is minimal.

Technical data:

- ◆ traversing speed - hand driven
- ◆ retained on the NP01 track by safety claws on the housing
- ◆ weight - 8,7 kg
- ◆ brake system
- ◆ SWL - 600 kg
- ◆ Suspension points for lifting wire and safety wire

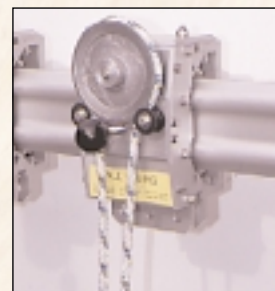
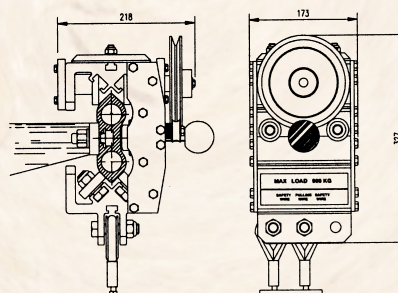


ROPEDRIVEN TRAVERSING TROLLEY NP01 R

The ropedriven trolley is moved horizontally using a rope and a drive wheel. This solution is often chosen as a less expensive alternative to the electrical trolley.

Technical data:

- ◆ traversing speed - hand driven
- ◆ retained on the NP01 track by safety claws on the housing
- ◆ weight - 11,7 kg
- ◆ brake system
- ◆ SWL - 600 kg
- ◆ Suspension points for lifting wire and safety wire

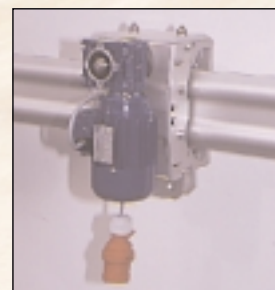
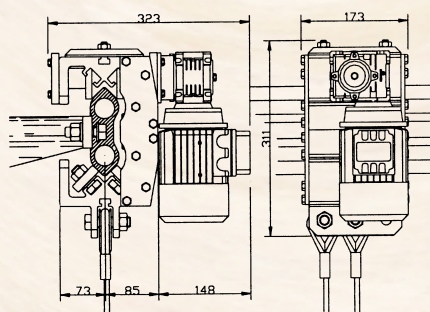


ELECTRICAL TRAVERSING TROLLEY NP01 E

The electrical powered trolley comprises 1 drive wheel, 4 stainless steel rollers and a geared motor with a brake system. The trolley is controlled by push-buttons from the control panel (situated in the cradle).

Technical data:

- ◆ traversing speed - 0,3 m/s
- ◆ retained on the NP01 track by safety claws on the casting
- ◆ weight - 16,1 kg
- ◆ electrical motor 3 or single phase, 230-400 V
- ◆ level of protection IP54
- ◆ SWL - 600 kg
- ◆ Suspension points for lifting wire and safety wire



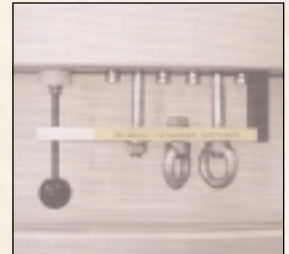
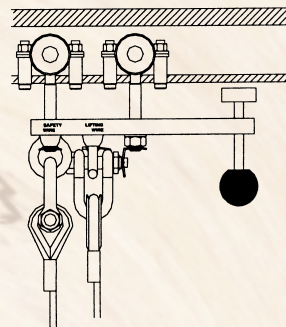
Trolleys for the NP03/04/21 track

MANUAL TRAVERSING TROLLEY NP03/04 M

The manual trolley comprises 2 no. ROB rollers, service brake (screw type) and chassis plate.

Technical data:

- ◆ traversing speed - hand driven
- ◆ weight - 4,2 kg / 6,7 kg
- ◆ brake system
- ◆ W.L.L - 400 kg
- ◆ Suspension points for both lifting and safety wire ropes.



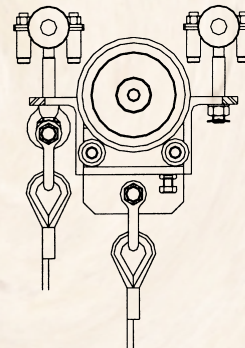
As standard the trolley is natural anodised. The trolley is equipped with a brake system. On many buildings, a manual trolley will be sufficient since the effort required to traverse the trolley is minimal.

ROPEDRIVEN TRAVERSING TROLLEY NP03/04 R

The rope-driven trolleys operate through a wire rope and a drive wheel. It is possible to move the trolley from the ground (or the end of the rope).

Technical data:

- ◆ traversing speed - hand driven
- ◆ weight - 10 kg / 14 kg
- ◆ brake system
- ◆ W.L.L - 400 kg
- ◆ suspension points for lifting wire and safety wire.

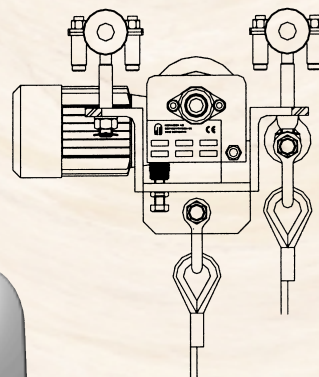


ELECTRICAL TRAVERSING TROLLEY NP03/04 E

The electrical trolley is the perfect choice if the building is high or the facade has different levels which make it difficult to use a manual trolley. The special sliding mechanism makes tight turns smooth and easy.

Technical data:

- ◆ traversing speed - 6 meter per minute
- ◆ weight : 13,5 / 16 kilo
- ◆ self restraining - no external brake
- ◆ W.L.L - 400 kg
- ◆ electrical engine, 3 phase or single phase, 230-400V
- ◆ level of protection IP 54
- ◆ suspension points for lifting wire and safety wire



NORACON AS

Sofiemyrveien 6 • N-1412 Sofiemyr • Norway

Tel. 0047 66 99 56 50 • Fax. 0047 66 99 56 51 • E-mail: noracn@noracn.com • www.noracn.com